



MANTONS

ESTATE AGENTS

2 Bedroom Semi-Detached for Sale - £260,000

Bunting Road, Luton, Bedfordshire, LU4 0UA



KEY FEATURES:

- WELL APPOINTED SEMI DETACHED HOME
- TWO GENEROUS SIZE BEDROOMS
- NO UPPER CHAIN COMPLICATIONS
- IDEAL FIRST TIME OR INVESTMENT PURCHASE
- GAS CENTRAL HEATING VIA A COMBI BOILER
- GENEROUS SIZE SOUTH/WEST FACING GARDEN
- EASY ACCESS TO M1 JUN 11 & 11A
- FITTED KITCHEN/BREAKFAST ROOM

Description

MANTONS ESTATE AGENTS are pleased to offer for sale this well presented two bedroom semi detached home located on the popular 'Birds' development with no upper chain complications.

Occupying a generous size plot with ample potential to extend to the rear (stp), ideal first time purchase or buy-to-let investment (£1300.00 pcm Approx.).

In brief the property comprises; Entrance lobby, 12ft lounge with patio door leading to the rear garden, fitted kitchen/breakfast room, two bedrooms & fitted bathroom suite.

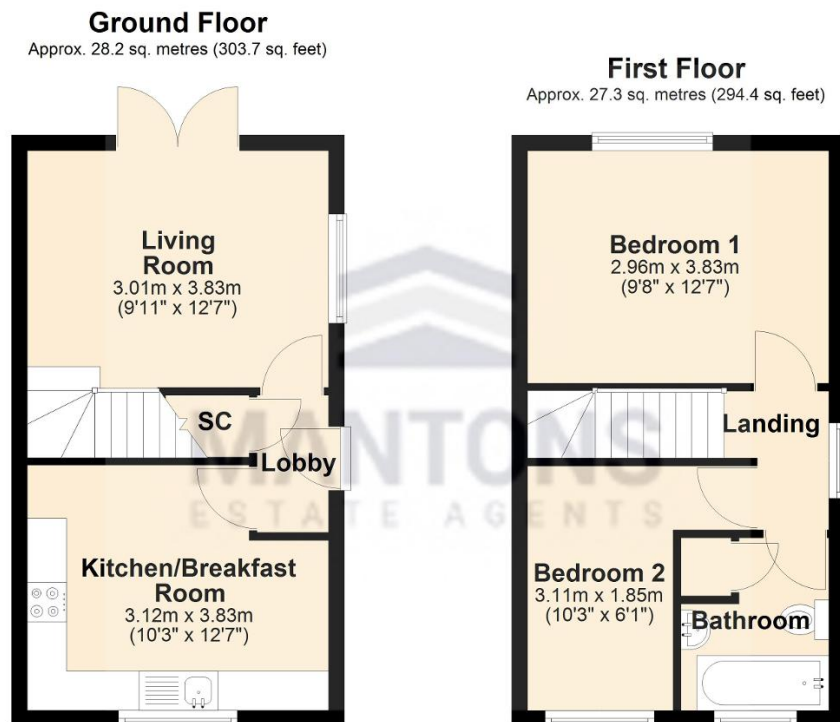
Further benefits include; Double glazed windows & doors, gas central heating (serviced via a replacement boiler), beautiful secluded South/West facing rear garden with patio area & driveway providing ample off road parking.

For more information or to arrange a viewing contact Mantons Estate Agents.

Bunting Road is a select close on the popular 'Birds' development, located on the outskirts of Luton on the way to Dunstable/Houghton Regis. Junction 11a of the M1 motorway is a short drive as is Leagrave ThamesLink Train station and Luton & Dunstable hospital is a short walk.

Additional Information

EPC Rating C. Council Tax Band B. 598 Sq.ft (Approx.)



Total area: approx. 55.6 sq. metres (598.1 sq. feet)