

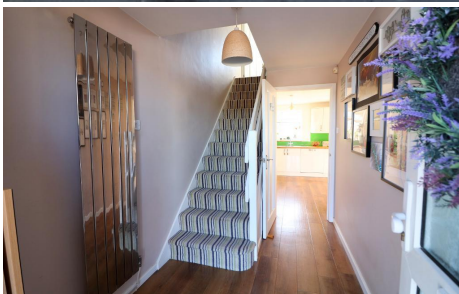


MANTONS

ESTATE AGENTS

3 Bedroom Terraced for Sale - £300,000

Buchanan Drive, Luton, Bedfordshire, LU2 0RX



KEY FEATURES:

- BEAUTIFULLY PRESENTED TERRACE HOME • THREE GENEROUS SIZE BEDROOMS • NO UPPER CHAIN COMPLICATIONS • DECORATED TO A CONTEMPORARY THEME • REFITTED KITCHEN/DINER & BATHROOM • PRIVATE WEST FACING REAR GARDEN • GARAGE ENCLOSED IN NEAR-BY BLOCK • REPLACEMENT INTERNAL DOORS

Description

MANTONS ESTATE AGENTS are pleased to offer for sale this immaculate & extensively improved three bedroom terraced family home, available with no upper chain complications.

Beautifully presented throughout, this home features modern décor with smooth ceilings, neutral floor coverings & replacement internal doors. A refitted kitchen/diner & bathroom, along with gas central heating powered by a replacement combination boiler installed in 2022, are just a few of the highlights that make this property stand out. An internal viewing is highly recommended to fully appreciate all it has to offer.

The ground floor comprises a welcoming entrance hallway with stairs leading to the first floor, a bright & spacious living room, stylish refitted kitchen/diner featuring timber worktops, ample cabinetry, integrated appliances & patio doors opening to the rear garden. Upstairs, there is a contemporary refitted bathroom suite & three well proportioned bedrooms.

Additional benefits include double glazed windows & doors, an intruder alarm, a garage situated in a nearby block & a well maintained West facing rear garden with a patio area & garden shed.

For further information or to arrange a viewing, contact Mantons Estate Agents today.

Buchanan Drive is located in the desirable St. Anne's neighborhood of Luton, offering convenient access to a range of local amenities. London Luton Airport, Junction 10 of the M1 motorway & ThamesLink train stations are all within easy reach. Asda supermarket is just a short drive away, while Crawley Green Infant School & Queen Elizabeth High School are all within walking distance.

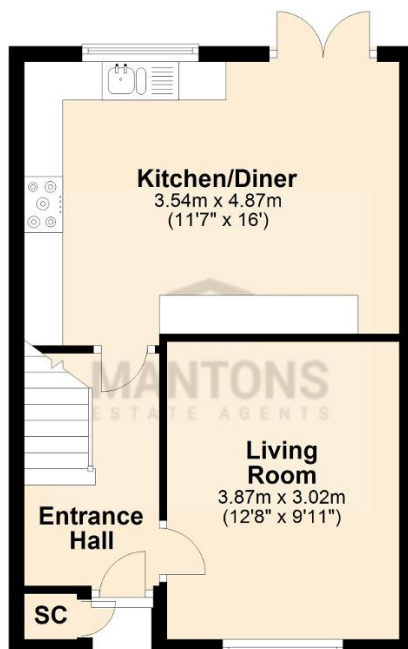
Additional Information

EPC Rating C. Council Tax Band C. 780 sqft (Approx.)



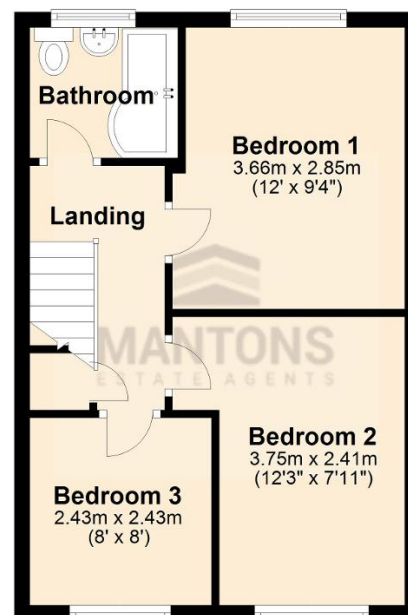
Ground Floor

Approx. 35.8 sq. metres (385.4 sq. feet)



First Floor

Approx. 36.7 sq. metres (394.7 sq. feet)



Total area: approx. 72.5 sq. metres (780.1 sq. feet)