



MANTONS

ESTATE AGENTS

2 Bedroom Terraced for Sale - £260,000

Ridgway Road, Luton, Bedfordshire, LU2 7RR



KEY FEATURES:

- WELL APPOINTED TERRACE HOME • TWO GENEROUS SIZE BEDROOMS • FORMALLY A THREE BEDROOM HOME • NO UPPER CHAIN COMPLICATIONS • STUDY/DRESSING ROOM • 24FT LOUNGE/DINER • FIRST FLOOR BATHROOM • WALKING DISTANCE TO LUTON TRAIN STATION

Description

MANTONS ESTATE AGENTS are pleased to offer for sale this spacious two bedroom (formally three bedrooms) terrace home located within the popular area of 'Hightown' with no upper chain complications.

Ideal first time or investment purchase, £1200.00 rental income per month.

Location is key to this property, if you're looking for a nice residential area within a short walk of Luton ThamesLink train station this could be the property for you.

The third bedroom has been converted to a bathroom & office/dressing room whilst the original ground floor bathroom is now part of the kitchen.

In brief the property comprises; Entrance hall with stairs rising to the first floor, 24ft lounge/diner with feature fire place, leading through to a fitted kitchen. On the first floor are two generous size bedrooms, additional room that could be utilised as an office or dressing room & a spacious bathroom suite.

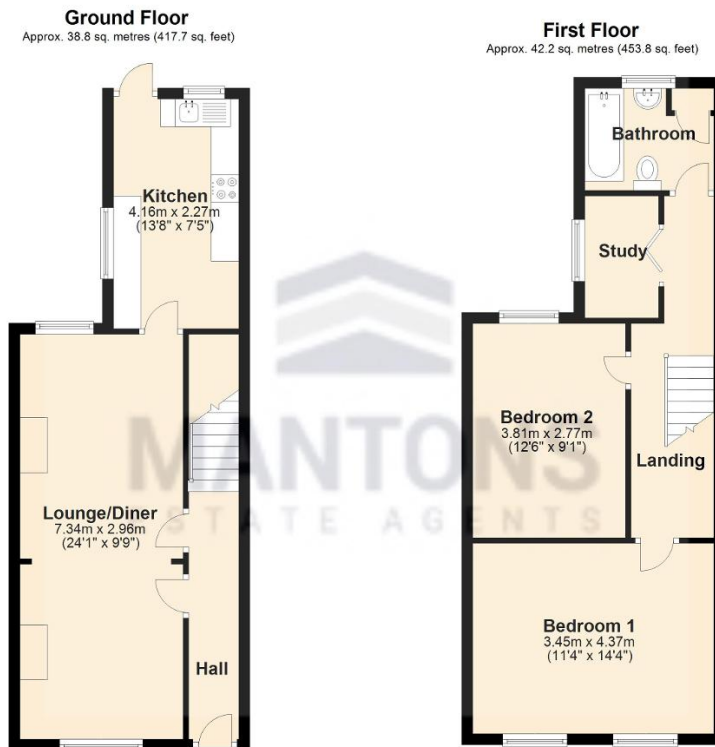
Further benefits include; enclosed rear garden, gas central heating & double glazed windows.

For further information or to arrange a viewing contact Mantons Estate Agents.

Ridgway Road is located within walking distance of Luton ThamesLink train station and town centre, ideal location for a commuter. Also within easy reach to London Luton airport, junction 10 of the M1 motorway and local shops. 'Asda' supermarket is a short drive whilst the primary school 'St Matthews' and high school 'Stopsley' are both within walking distance.

Additional Information

EPC Rating TBC. Council Tax Band B. 871 sqft (Approx).



Total area: approx. 81.0 sq. metres (871.5 sq. feet)