

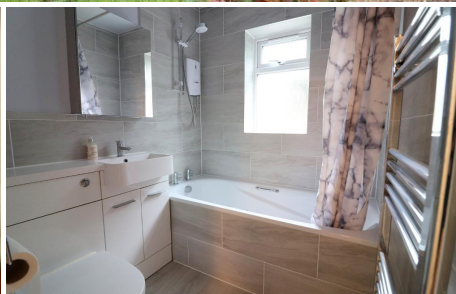


MANTONS

ESTATE AGENTS

2 Bedroom Maisonette for Rent - £1,100 per month

Ashcroft Road, Luton, Bedfordshire, LU2 9AX



KEY FEATURES:

- WELL PRESENTED GROUND FLOOR MAISONETTE • AVAILABLE TO RENT IMMEDIATELY - £1100 • TWO GENEROUS SIZE BEDROOMS • REFITTED KITCHEN & BATHROOM • DECORATED TO A CONTEMPORARY THEME • DOUBLE GLAZED WINDOWS & DOORS • GAS CENTRAL HEATING VIA COMBI BOILER • MODERN FLOOR COVERINGS

Description

MANTONS LETTINGS are delighted to offer this spacious & well presented two bedroom ground floor maisonette in Stopsley, available immediately for £1,100 per month.

The property has recently been redecorated in a contemporary style, featuring modern flooring, a refitted kitchen with a fridge/freezer & cooker and a stylish bathroom suite. It enjoys a private, secluded position at the rear of the building, complemented by an 'L'-shaped garden. The layout includes an entrance hall, two generously sized bedrooms, a spacious living room & a beautifully refitted bathroom.

Additional benefits include double glazed windows & doors, gas central heating powered by a combination boiler, a Positive Input Ventilation (PIV) system & resident parking.

Viewings are highly recommended for this impressive property. For more information or to arrange a viewing, contact Mantons Estate Agents today.

ADDITIONAL INFORMATION

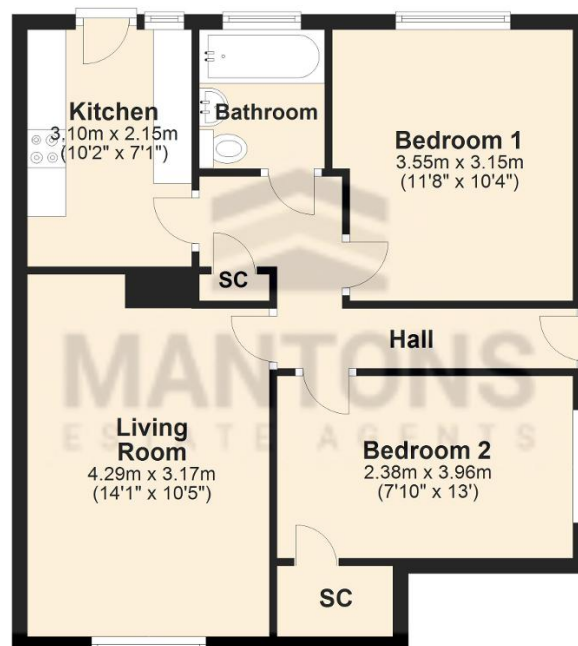
EPC Rating C
Council Tax Band A
Available to rent immediately
Deposit £1265.00 (5 weeks rent)
Holding deposit £253.00 (1 weeks rent)
Unfurnished - Kitchen appliances included
Client Money Protect Scheme (CMP) member number CMP005252
The Property Ombudsman (TPO) member number D12281

Ashcroft Road is situated near Stopsley Village, offering a wide range of amenities such as Tesco, Co-op, medical practices, dentist, chemist, coffee shops, library & various eateries. The nearby A505 provides convenient access to the market town of Hitchin & the Inspire Fitness Centre. Additionally, Junction 10 of the M1 motorway, Parkway Thameslink train station & London Luton Airport are all easily accessible.



Ground Floor

Approx. 54.5 sq. metres (586.2 sq. feet)



Total area: approx. 54.5 sq. metres (586.2 sq. feet)