



MANTONS

ESTATE AGENTS

2 Bedroom Bungalow for Sale - £340,000

Wadhurst Avenue, Luton, Bedfordshire, LU3 1UQ



KEY FEATURES:

- WELL APPOINTED SEMI DETACHED BUNGALOW
- TWO GENEROUS SIZE BEDROOMS
- REPLACEMENT BOILER
- FITTED KITCHEN & SHOWER ROOM
- 24FT LOUNGE/DINER
- WALKING DISTANCE TO AN ARRAY OF SHOPS
- PAVED DRIVEWAY
- UTILITY ROOM WITH WC

Description

MANTONS ESTATE AGENTS are delighted to present this well-appointed chain-free two-bedroom (formerly three-bedroom) semi-detached bungalow, situated on a charming tree-lined avenue.

The property features a spacious 24ft lounge/diner with French doors opening onto the rear garden. A recently replaced Worcester boiler enhances the home's efficiency. At the side of the bungalow, there is a utility room & a lean-to/workshop, offering additional storage space and a convenient WC.

The interior comprises an entrance hall, lounge/diner with patio doors leading to the garden, a fitted kitchen, and a modern shower room suite. Both bedrooms are well-proportioned, with the master bedroom featuring fitted wardrobes.

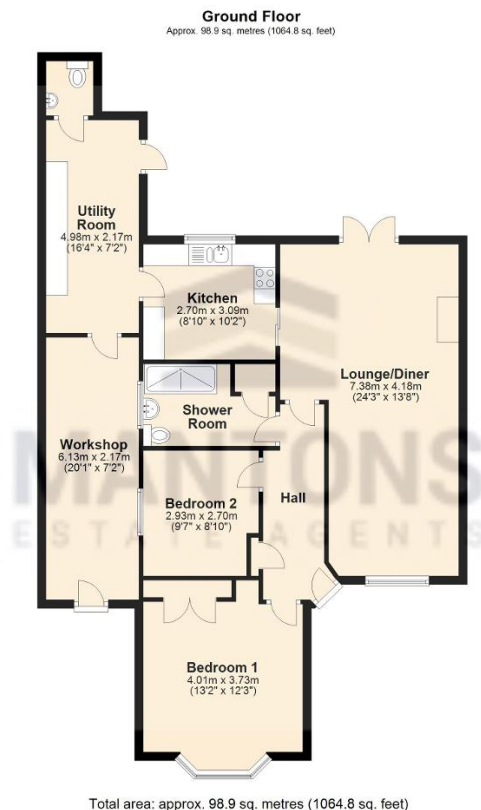
Additional benefits include double glazed windows & doors and gas central heating. The paved driveway provides ample parking for multiple vehicles, while the secluded rear garden offers an ideal space for relaxation and enjoyment.

For more information or to arrange a viewing, please contact Mantons Estate Agents.

Wadhurst Avenue is a beautiful 'Tree lined' Avenue located in the popular New Bedford Road area. Local amenities are within walking distance including Co-Op supermarket, bus stops & doctors. Junction 10 of the M1 motorway, Luton ThamesLink train station & London Luton airport are all a short drive away. William Austin Primary & Icknield High are the school catchments.

Additional Information

EPC Rating TBC. Council Tax Band C. 1064 sqft (Approx.)



Total area: approx. 98.9 sq. metres (1064.8 sq. feet)