



MANTONS

ESTATE AGENTS

2 Bedroom Terraced for Sale - £290,000

Dexter Close, Luton, Bedfordshire, LU3 4DX



KEY FEATURES:

- IMMACULATE TERRACE HOME • TWO GENEROUS SIZE BEDROOMS • DECORATED TO A CONTEMPORARY THEME • REPLACEMENT BOILER • CONSERVATORY WITH A NEWLY FITTED ROOF • REFITTED BATHROOM SUITE • FITTED KITCHEN/BREAKFAST ROOM • WALKING DISTANCE TO SAINSBURYS & ALDI

Description

Mantons Estate Agents are delighted to present for sale this very impressive two bedroom terrace home located in the popular Barton Hills development.

The property features contemporary decor throughout, stylish kitchen/breakfast room, refitted bathroom suite & a secluded south facing rear garden. more recently the boiler has been replaced along with a newly installed roof to the conservatory.

The home includes an entrance lobby, 14ft living room, fitted kitchen/breakfast room opening to the conservatory, two bedrooms & a refitted bathroom suite.

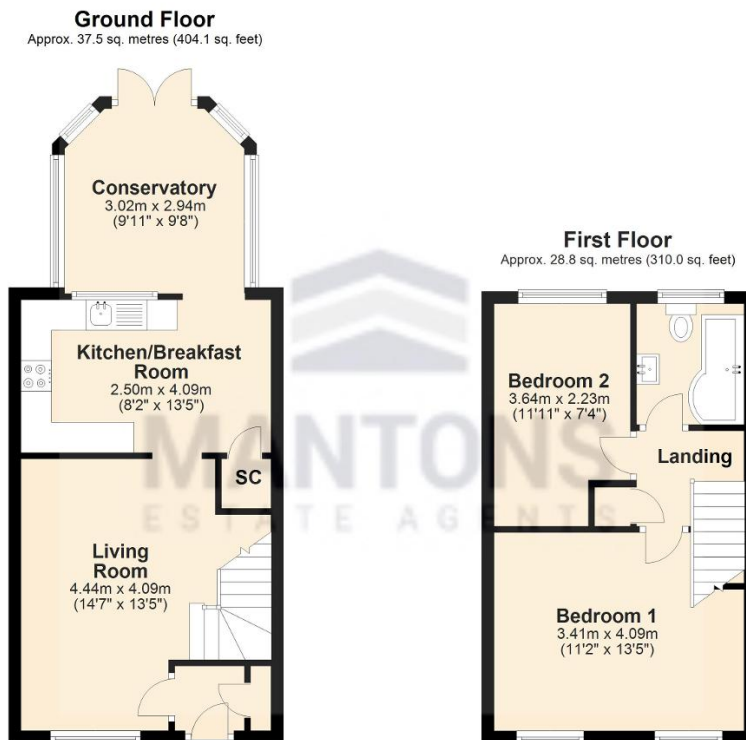
Additional benefits include double glazed windows & doors, gas central heating, allocated parking bay, a low maintenance rear garden with patio area, artificial lawn & gated rear access.

For more information or to arrange a viewing, contact Mantons Estate Agents.

Dexter Close is situated in Barton Hills, a highly sought-after housing development built in the early 1990s. This area remains as popular today as when it was first established. Residents enjoy convenient access to various local amenities, including Sainsbury's & Aldi supermarkets, doctors, Costa coffee shop, dentist, a public house & local bus routes. The development falls within the catchment areas for Warden Hill Primary & Lea Manor High schools.

Additional Information

EPC Rating D. Council Tax Band C. 714 sqft (Approx.)



Total area: approx. 66.3 sq. metres (714.1 sq. feet)