



# MANTONS

ESTATE AGENTS

1 Bedroom Park Home for Rent - £750 per month

Castle Hill Road, Totternhoe, Dunstable, LU6 1QH



## KEY FEATURES:

- IMMACULATE CONDITION THROUGHOUT • COMPLETELY REFURBISHED • AVAILABLE TO RENT IMMEDIATELY - £750 • DECORATED TO A CONTEMPORARY THEME • REFITTED KITCHEN & BATHROOM • GAS CENTRAL HEATING VIA A COMBI BOILER • BEDROOM TWO/HOME OFFICE • NEWLY INSTALLED FLOOR COVERINGS

## Description

MANTONS LETTINGS are pleased to offer for rent this immaculate one bedroom park home located in the quaint village of Totternhoe.

This particular park home has been completely refurbished throughout including a stylish kitchen & bathroom suite, modern floor covering & contemporary decor, perfect to move straight into.

The property is available to rent immediately for £750 per month. All residents must be 45 years of age or above with no children or pets.

In brief the property comprises; Entrance hall, double bedroom with fitted wardrobes, second bedroom/home office also with built-in wardrobe, modern bathroom suite, fitted kitchen & living room.

Further benefits include; Double glazed windows & doors, gas central heating serviced via a combination boiler (LPG), lawn area with garden shed & resident parking .

Viewings come recommended to fully appreciate the condition & feel this property has to offer.

## ADDITIONAL INFORMATION

Council Tax Band A

Available to rent immediately

Deposit £865.00 (5 weeks rent)

Holding deposit £196.00p (1 weeks rent)

Unfurnished

Client Money Protect Scheme (CMP) member number CMP005252

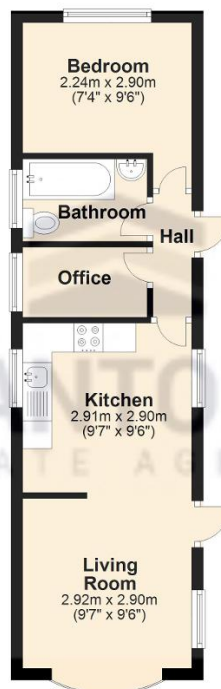
The Property Ombudsman (TPO) member number D12281

Poplar Farm Park is located in the quaint village of Totternhoe which sits just outside to town of Dunstable. Totternhoe has easy access to the A5 for the M1 & A41 for the M25.



## Ground Floor

Approx. 32.5 sq. metres (350.1 sq. feet)



Total area: approx. 32.5 sq. metres (350.1 sq. feet)