



MANTONS

ESTATE AGENTS

2 Bedroom End Terraced for Sale - £157,500

Aspen Way, Silsoe, Bedfordshire, MK45 4GF



KEY FEATURES:

- IMPRESSIVE END OF TERRACE HOME • TWO GENEROUS SIZE BEDROOMS • 50% SHARED OWNERSHIP •
- DECORATED TO A MODERN THEME THROUGHOUT • FITTED KITCHEN, BATHROOM & CLOAKROOM •
- DOUBLE GLAZED WINDOWS & DOORS • ENCLOSED REAR GARDEN WITH DECKING AREA • GAS CENTRAL HEATING VIA A COMBI BOILER

Description

Introducing an impressive & spacious two-bedroom end-of-terrace home brought to you by MANTONS ESTATE AGENTS. This property presents a unique opportunity for those eager to step onto the property ladder, offered under a shared ownership scheme with 50% available. Eligibility criteria apply, & there's the added advantage of the ability to purchase a higher percentage of the share at a later date, subject to specific criteria.

Constructed to a high standard in 2016, this home boasts contemporary decor, smooth ceilings, & stylish fixtures & fittings. A thoughtfully designed layout includes an entrance hall with stairs rising to the first floor, a convenient cloakroom, a fitted kitchen, & a generous 13ft living room with a patio door leading to the rear garden. Two well-proportioned bedrooms & a family bathroom suite, complete with a master bedroom featuring built-in storage, offer comfortable living spaces.

Additional benefits encompass double-glazed windows & doors, gas central heating serviced via a combination boiler, an enclosed rear garden with a timber decking area, a part-boarded loft for extra storage, & an allocated parking bay to the front of the property.

This property is a blend of modern comfort and practical design, providing an ideal opportunity for those seeking to establish their foothold in the property market. Viewings are highly recommended to fully appreciate the condition & size of this impressive home. Contact Mantons Estate Agents now to arrange your viewing and seize this enticing opportunity.

Introducing Aspen Way, an exquisite residence nestled in the highly sought-after 'Silsoe Grange' development, ideally located in the charming village of Silsoe.

Amenities abound within a short walk, ensuring convenience for residents. The nearby Coop supermarket, a well-equipped gym, a welcoming public house, and the enchanting 'Wrest Park' provide a delightful array of options for leisure and daily necessities.

Families will appreciate the proximity to esteemed educational institutions, as Aspen Way falls within the school catchments of Silsoe Lower, Arnold Middle, & Harlington Upper. This ensures a well-rounded and accessible education for residents.

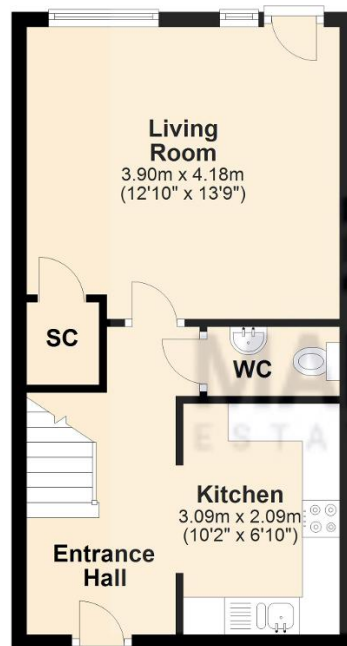
Discover the perfect blend of comfort, convenience, and natural beauty in this Silsoe gem. Aspen Way invites you to indulge in a lifestyle where tranquility meets modern living, making it an ideal home for those seeking the epitome of gracious living on the 'Silsoe Grange' development.



Additional Information

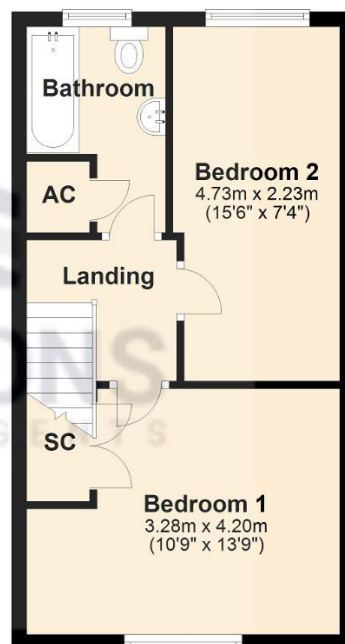
Ground Floor

Approx. 33.9 sq. metres (365.1 sq. feet)



First Floor

Approx. 34.1 sq. metres (366.7 sq. feet)



Total area: approx. 68.0 sq. metres (731.8 sq. feet)